

UNITED STATES BANKRUPTCY COURT
FOR THE EASTERN DISTRICT OF PENNSYLVANIA

In re:) Chapter 11
)
Wordsworth Academy, et al.,¹) Case No. 17-14463 (AMC)
)
Debtors.) Jointly Administered
)

AFFIDAVIT OF SERVICE

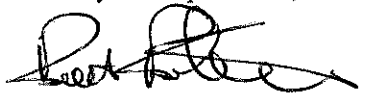
STATE OF NEW YORK)
) ss:
COUNTY OF KINGS)

I, Edward Calderon, declare:

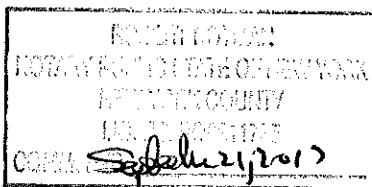
- 1. I am over the age of 18 years and not a party to these chapter 11 cases.
- 2. I am employed by Donlin, Recano & Company, Inc., 6201 15th Avenue, Brooklyn, NY 11219.
- 3. On the 1st day of September, 2017, I caused a true and accurate copy of the "Declaration of Disinterestedness of Michael Silverman of Integra Realty Resources-Philadelphia in Support of Retention as Ordinary Course Professional" (Docket No. 254), to be served upon the parties as set forth in Exhibit 1, attached hereto, via First Class US Mail
- 4. I declare under penalty of perjury that the foregoing is true and correct to the best of my personal knowledge. Executed this 8th day of Septmber, 2017 at Brooklyn, New York.

By Edward Calderon
Edward Calderon

Sworn before me this
8th day of September, 2017



Notary Public



¹ The Debtors in these Chapter 11 Cases, along with the last four digits of each Debtor's federal tax identification number, are: Wordsworth Academy (9031); Wordsworth CUA 5, LLC (0983); and Wordsworth CUA 10, LLC (5980). Wordsworth Academy has an address at 3300 Henry Ave., Philadelphia, PA 19129.

EXHIBIT 1

Document Page 3 of 3
Wordsworth Academy, et al.
Exhibit Page

Page # : 1 of 1

09/01/2017 03:32:35 PM

000075P002-1369S-042
 BLANK ROME LLP
 JOEL CHARLES SHAPIRO, ESQ.
 JOSEF W. MINTZ, ESQ.
 ONE LOGAN STREET
 130 NORTH 18TH STREET
 PHILADELPHIA PA 19103

000060P001-1369S-042
 CITY OF PHILADELPHIA AND/OR WATER REVENUE BUREAU
 MEGAN N HARPER
 MUNICIPAL SERVICES BLDG
 1401 JFK BLVD 5TH FLOOR
 PHILADELPHIA PA 19102-1595

000074P001-1369S-042
 COMMONWEALTH OF PENNSYLVANIA
 DEPT OF REVENUE
 CHRISTOPHER R MOMJIAN
 21 S 12TH ST 3RD FLOOR
 PHILADELPHIA PA 19107-3603

000065P001-1369S-042
 CONNOR WEBER & OBERLIES
 MONICA M REYNOLDS
 171 WEST LANCASTER AVE
 PAOLI PA 19301

000058P001-1369S-042
 DUANE MORRIS LLP
 JAMES J. HOLMAN
 30 SOUTH 17TH ST
 PHILADELPHIA PA 19103-4196

000059P001-1369S-042
 DUANE MORRIS LLP
 JAMES J. HOLMAN
 222 DELAWARE AVE STE 1600
 WILMINGTON DE 19801-1659

000066P001-1369S-042
 DUANE MORRIS LLP
 MICHAEL R. LASTOWSKI, ESQ.
 222 DELAWARE AVE STE 1600
 WILMINGTON DE 19801

000055P001-1369S-042
 FLASTER/GREENBERG P.C.
 WILLIAM J. BURNETT, ESQ.
 1835 MARKET ST STE 1050
 PHILADELPHIA PA 19103

000057P001-1369S-042
 FLASTER/GREENBERG P.C.
 WILLIAM J. BURNETT, ESQ.
 1201 N. ORANGE ST STE 301
 WILMINGTON DE 19801

000067P001-1369S-042
 GELLERT SCALI BUSENKELL & BROWN LLC
 HOLLY E SMITH, ESQ
 601 WALNUT ST, STE 750 W
 THE CURTIS CENTER
 PHILADELPHIA PA 19106

000062P001-1369S-042
 KAPLIN STEWART MELOFF REITER & STEIN PC
 DANIEL R UTAIN
 910 HARVEST DR
 POST OFFICE BOX 3037
 BLUE BELL PA 19422-0765

000061P001-1369S-042
 KURTZMAN/STEADY LLC
 JEFFREY KURTZMAN
 401 S 2ND ST STE 301
 PHILADELPHIA PA 19147

000063P001-1369S-042
 LACKS & ASSOCIATES
 STANTON M LACKS
 3220 TILLMAN DRIVE STE 114
 BENSALEM PA 19020

000077P001-1369S-042
 LIPSKY AND BRANDT
 DANA K COYNE
 1101 MARKET ST STE 2820
 PHILADELPHIA PA 19107

000076P001-1369S-042
 MICHELLE K CARSON, ESQUIRE
 DEVEREUX ADVANCED BEHAVIORAL HEALTH
 2012 RENAISSANCE BLVD
 KING OF PRUSSIA PA 19406

000007P002-1369S-042
 Office of the U.S. Trustee
 Kevin P Callahan
 833 Chestnut Street
 Suite 500
 Philadelphia PA 19107

000064P001-1369S-042
 PA DEPT OF LABOR & INDUSTRY
 AMY WEIKEL
 COLLECTION SUPPORT UNIT
 651 BOAS ST RM 702
 HARRISBURG PA 17121

000068P001-1369S-042
 PA DEPT OF LABOR & INDUSTRY
 CARLA P ARIAS
 651 BOAS ST 10TH FLOOR
 HARRISBURG PA 17121

000078P001-1369S-042
 PARKER IBRAHIM & BERG LLC
 FRED W. HOENSCH, ESQ.
 1635 MARKET STREET, 11TH FLOOR
 PHILADELPHIA PA 19103

000056P002-1369S-042
 REED SMITH LLP
 PETER CLARK II; JENNIFER KNOX
 THREE LOGAN SQUARE
 1717 ARCH ST STE 3100
 PHILADELPHIA PA 19103

000073P001-1369S-042
 STRADLEY RONON STEVENS & YOUNG LLP
 MARK J DORVAL
 2005 MARKET ST STE 2600
 PHILADELPHIA PA 19103