

UNITED STATES BANKRUPTCY COURT
FOR THE EASTERN DISTRICT OF PENNSYLVANIA

In re:)	Chapter 11
)	
Wordsworth Academy, et al., ¹)	Case No. 17-14463 (AMC)
)	
Debtors.)	Jointly Administered
)	

AFFIDAVIT OF SERVICE

STATE OF NEW YORK)
) ss:
COUNTY OF KINGS)

I, Sung Kim, declare:

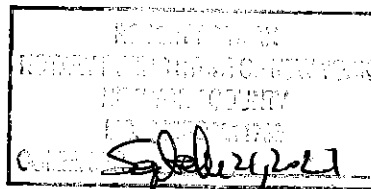
1. I am over the age of 18 years and not a party to these chapter 11 cases.
2. I am employed by Donlin, Recano & Company, Inc., 6201 15th Avenue, Brooklyn, NY 11219.
3. On the 30th day of October, 2017, I caused a true and accurate copy of the "Local Rule 2016-5 Third Request for Payment on Account for Compensation and Reimbursement of Expenses of Getzler Henrich & Associates LLC, Financial Advisor for the Debtors, for the Period September 1, 2017 Through September 30, 2017", along with the Notice and the relevant exhibits (Docket No. 377), to be served upon the parties as set forth in Exhibit 1, attached hereto, via First Class US Mail.
4. I declare under penalty of perjury that the foregoing is true and correct to the best of my personal knowledge. Executed this 6th day of November, 2017 at Brooklyn, New York.

By *Sung Kim*
Sung Kim

Sworn before me this
6th day of November, 2017

[Signature]

Notary Public



¹ The Debtors in these Chapter 11 Cases, along with the last four digits of each Debtor's federal tax identification number, are: Wordsworth Academy (9031); Wordsworth CUA 5, LLC (0983); and Wordsworth CUA 10, LLC (5980). Wordsworth Academy has an address at 3300 Henry Ave., Philadelphia, PA 19129.

EXHIBIT 1

Document Page 3 of 4
Wordsworth Academy, et al.
Exhibit Page

Page # : 1 of 1

10/30/2017 02:42:41 PM

000079P001-1369S-059
A SECOND CHANCE, INC.
BRYAN ULISHNY
8350 FRANKSTOWN AVE
PITTSBURGH PA 15221

000083P001-1369S-059
BETHANNA
RONALD SINGER
1030 SECOND STREET PIKE
SOUTHAMPTON PA 18966

000080P001-1369S-059
CHILD FIRST SERVICES, INC.
NATHANIEL WILLIAMS
718 ARCH STREET SUITE 500-N
PHILADELPHIA PA 19106

000082P001-1369S-059
CHILDREN'S CHOICE, INC.
MARGARET PHILIPS
616 EAST 24TH STREET
CHESTER PA 19106

000081P001-1369S-059
DELTA COMMUNITY SUPPORTS
DAVID WYHER
1777 SENTRY PARKWAY WEST
BUILDING 14 SUITE 400
BLUE BELL PA 19422

000054P002-1369S-059
Wordsworth Academy
Attn: President
3300 Henry Ave
Philadelphia PA 19129

000075P002-1369S-059
BLANK ROME LLP
JOEL CHARLES SHAPIRO, ESQ.
JOSEF W. MINTZ, ESQ.
ONE LOGAN STREET
130 NORTH 18TH STREET
PHILADELPHIA PA 19103

000060P001-1369S-059
CITY OF PHILADELPHIA AND/OR WATER REVENUE BUREAU
MEGAN N HARPER
MUNICIPAL SERVICES BLDG
1401 JFK BLVD 5TH FLOOR
PHILADELPHIA PA 19102-1595

000074P001-1369S-059
COMMONWEALTH OF PENNSYLVANIA
DEPT OF REVENUE
CHRISTOPHER R MOMJIAN
21 S 12TH ST 3RD FLOOR
PHILADELPHIA PA 19107-3603

000065P001-1369S-059
CONNOR WEBER & OBERLIES
MONICA M REYNOLDS
171 WEST LANCASTER AVE
PAOLI PA 19301

000058P001-1369S-059
DUANE MORRIS LLP
JAMES J. HOLMAN
30 SOUTH 17TH ST
PHILADELPHIA PA 19103-4196

000059P001-1369S-059
DUANE MORRIS LLP
JAMES J. HOLMAN
222 DELAWARE AVE STE 1600
WILMINGTON DE 19801-1659

000066P001-1369S-059
DUANE MORRIS LLP
MICHAEL R. LASTOWSKI, ESQ.
222 DELAWARE AVE STE 1600
WILMINGTON DE 19801

000055P001-1369S-059
FLASTER/GREENBERG P.C.
WILLIAM J. BURNETT, ESQ.
1835 MARKET ST STE 1050
PHILADELPHIA PA 19103

000057P001-1369S-059
FLASTER/GREENBERG P.C.
WILLIAM J. BURNETT, ESQ.
1201 N. ORANGE ST STE 301
WILMINGTON DE 19801

000067P001-1369S-059
GELLERT SCALI BUSENKELL & BROWN LLC
HOLLY E SMITH, ESQ
601 WALNUT ST, STE 750 W
THE CURTIS CENTER
PHILADELPHIA PA 19106

000062P001-1369S-059
KAPLIN STEWART MELOFF REITER & STEIN PC
DANIEL R UTAIN
910 HARVEST DR
POST OFFICE BOX 3037
BLUE BELL PA 19422-0765

000085P001-1369S-059
KREISER & ASSOCIATES PC
TRAVIS L KREISER
1300 LAWRENCE ROAD
HAVERTOWN PA 19083

000061P001-1369S-059
KURTZMAN/STEADY LLC
JEFFREY KURTZMAN
401 S 2ND ST STE 301
PHILADELPHIA PA 19147

000063P001-1369S-059
LACKS & ASSOCIATES
STANTON M LACKS
3220 TILLMAN DRIVE STE 114
BENSALEM PA 19020

000077P001-1369S-059
LIPSKY AND BRANDT
DANA K COYNE
1101 MARKET ST STE 2820
PHILADELPHIA PA 19107

000084P001-1369S-059
MARINO ASSOCIATES
STEVEN F MARINO, ESQ
301 WHARTON ST
PHILADELPHIA PA 19147

000076P001-1369S-059
MICHELLE K CARSON, ESQUIRE
DEVEREUX ADVANCED BEHAVIORAL HEALTH
2012 RENAISSANCE BLVD
KING OF PRUSSIA PA 19406

000077P002-1369S-059
Office of the U.S. Trustee
Kevin P Callahan
833 Chestnut Street
Suite 500
Philadelphia PA 19107

000086P001-1369S-059
PA DEPARTMENT OF LABOR AND INDUSTRY
DEB SECREST, AUTHORIZED AGENT
COLLECTIONS SUPPORT UNIT
651 BOAS ST ROOM 702
HARRISBURG PA 17121

000064P001-1369S-059
PA DEPT OF LABOR & INDUSTRY
AMY WEIKEL
COLLECTION SUPPORT UNIT
651 BOAS ST RM 702
HARRISBURG PA 17121

000068P001-1369S-059
PA DEPT OF LABOR & INDUSTRY
CARLA P ARIAS
651 BOAS ST 10TH FLOOR
HARRISBURG PA 17121

000078P001-1369S-059
PARKER IBRAHIM & BERG LLC
FRED W. HOENSCH, ESQ.
1635 MARKET STREET, 11TH FLOOR
PHILADELPHIA PA 19103

000056P002-1369S-059
REED SMITH LLP
PETER CLARK II, JENNIFER KNOX
THREE LOGAN SQUARE
1717 ARCH ST STE 3100
PHILADELPHIA PA 19103

000073P001-1369S-059
STRADLEY RONON STEVENS & YOUNG LLP
MARK J DORVAL
2005 MARKET ST STE 2600
PHILADELPHIA PA 19103